



Product Service

CERTIFICATE

No. B 17 11 64272 012

Holder of Certificate: Xi'an Xiwuer Electronic & info. Co.,Ltd.

No 1118, Ziqiang East Road
710015 Xi'an, Shan'xi
PEOPLE'S REPUBLIC OF CHINA

Production Facility(ies): 64272

Certification Mark:



Product: Surge protection equipment
(Modular Power Supply SPD)

Model(s): MYS5-275/20(2+1), MYS5-275/20(4+1),
MYS5-275/20(2+1)(BNS), MYS5-275/20(4+1)(BNS),
MYS5-385/20-1P+NPE(NS7), MYS5-385/20-3P+NPE(NS)

Parameters:	Mounting Method :	Fixed
	Location :	Indoor
	Number Ports :	One
	SPD Class :	Type 2
	Max continuous operating voltage Uc :	See page 2 for details
	Nominal Discharge Current In :	See page 2 for details
	Max. Discharge Current I _{max} :	See page 2 for details
	Voltage protection level Up :	See page 2 for details

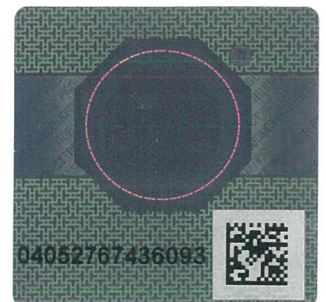
Tested according to: EN 61643-11:2012

The product was tested on a voluntary basis and complies with the essential requirements. The certification mark shown above can be affixed on the product. It is not permitted to alter the certification mark in any way. In addition the certification holder must not transfer the certificate to third parties. See also notes overleaf.

Test report no.: 68230709005

Valid until: 2022-11-07

Date, 2017-11-09 (Alex Kong)
Page 1 of 2





Product Service

CERTIFICATE
No. B 17 11 64272 012

Model	In (kA)	Imax (kA)	Uc (V)			Up (V)		
			L-N	L-PE	N-PE	L-N	L-PE	N-PE
MYS5-275/20(2+1)	20	40	320	275	275	3000	1500	1500
MYS5-275/20(4+1)	20	40	320	275	275	3000	1500	1500
MYS5-275/20(2+1)(BNS)	20	40	320	275	275	3000	1500	1500
MYS5-275/20(4+1)(BNS)	20	40	320	275	275	3000	1500	1500
MYS5-385/20-1P+NPE(NS7)	20	40	385	-	255	1900	-	1500
MYS5-385/20-3P+NPE(NS)	20	40	385	-	255	1900	-	1500